



2025 VOLUNTEER WELCOME PACKET



TABLE OF CONTENTS

<i>WELCOME LETTER.....</i>	<i>3</i>
<i>PACKING LIST.....</i>	<i>4</i>
<i>WHAT NOT TO BRING.....</i>	<i>4</i>
<i>EXTRA NOTES.....</i>	<i>4</i>
<i>CAMP THEME AND EVENING EVENTS.....</i>	<i>5</i>
<i>SCHEDULE.....</i>	<i>6</i>
<i>ARRIVAL AND PICK-UP INSTRUCTIONS.....</i>	<i>7</i>
<i>CLOSING CEREMONIES INVITATION.....</i>	<i>7</i>
<i>MAIL, PHOTOS AND GENERAL STORE.....</i>	<i>8</i>
<i>GENERAL POLICIES.....</i>	<i>9</i>
<i>COMMUNICATION AND TECHNOLOGY.....</i>	<i>9</i>
<i>DRESS CODE.....</i>	<i>10</i>
<i>CODE OF CONDUCT.....</i>	<i>11</i>
<i>VOLUNTEER DISCIPLINARY PROCEDURES.....</i>	<i>12</i>
<i>GUIDELINES FOR APPROPRIATE CONDUCT.....</i>	<i>12</i>
<i>CBTX SAFETY POLICY.....</i>	<i>13</i>
<i>SUPPORT THE MISSION.....</i>	<i>14</i>
<i>CAMP BLESSING MAP.....</i>	<i>15</i>

GENUINE

Welcome to Camp Blessing Texas

Dear VOLUNTEERS,

SUMMER is almost here, are you ready? We are so excited to have you join us at camp this summer. In this packet you'll find details about your arrival, packing list, camp theme, night-ly party themes, camp safety and so much more. Please read through this packet thoroughly.

Don't hesitate to reach out with any questions you may have. We can't wait to see you at Camp Blessing for summer 2025!

***Blessings,
Camp Blessing Team***



7227 CAMP BLESSING LANE, BRENHAM, TX 77833

GENUINE 2025

PACKING LIST ** PLEASE REFER TO THE DRESS CODE POLICIES ON PAGE 10

MEDICATIONS

- BIBLE, JOURNAL AND PEN
- FLASHLIGHT
- SUNSCREEN, HATS, SUN GLASSES, AND BUG SPRAY
- BACKPACK
- WATER BOTTLE
- SHIRTS: T-SHIRTS (NO SPAGHETTI STRAPS, TIGHT-FITTING SHIRTS, OR SHIRTS THAT COMPLETELY COVER SHORTS)**
- SHORTS** / PANTS (NO SKIRTS OR SKORTS).
- SWIMSUIT (ONE-PIECE FOR GIRLS, SWIM TRUNKS FOR GUYS - NO SPEEDOS)
- JACKET OR SWEATSHIRTS
- RAIN JACKET / PONCHO
- CLOSED-TOED SHOES (MUST HAVE SOCKS) - MANDATORY FOR ZIP-LINE, GIANT SWING, HORSES & ARCHERY
- OPEN-TOED SHOES (IF DESIRED)
- SHOWER SHOES (IF DESIRED)
- SOCKS & UNDERWEAR
- BEDDING: TWIN SHEETS, BLANKET OR SLEEPING BAG, AND PILLOW (PLEASE PACK EXTRA LINENS IN CASE OF ANY SPILLS OR ACCIDENTS)
- TOILETRIES: TOOTHBRUSH, TOOTHPASTE, SOAP, SHAMPOO, DEODORANT, FEMININE PRODUCTS
- APPROPRIATE SLEEPWEAR
- SHOWER TOWEL AND POOL TOWEL
- THEMED EVENT COSTUMES (SEE BELOW)

- PLEASE BRING ALL MEDICATIONS AND SUPPLEMENTS IN THEIR ORIGINAL BOTTLE
 - PRESCRIBED MEDICATIONS MUST BE IN THE ORIGINAL PRESCRIBED BOTTLE WITH ATTENDEE NAME, MEDICATION NAME, DOSAGE AND FREQUENCY
 - ALL MEDICATIONS AND SUPPLEMENTS WILL BE SORTED INTO BLISTER PACKS AT CAMP CHECK-IN
- *NOTE: NECESSARY MEDICATIONS ONLY**

DO NOT BRING:

IPAD / IPOD OR CELL PHONE (UNLESS IT IS A PRIMARY COMMUNICATION DEVICE), CAMERA (WE HAVE AN AMAZING MEDIA TEAM THAT WILL CAPTURE THE FUN!); WEAPONS (INCLUDING CONCEALED FIREARMS, KNIVES OF ANY KIND, SCISSORS, OR SHARP OBJECTS, ETC.) EXPENSIVE JEWELRY, LARGE SUMS OF MONEY, MUSIC PLAYERS, SNACKS (INCLUDING GUM, SODA, CANDY, ETC.) ALCOHOL, ILLEGAL DRUGS OR TOBACCO PRODUCTS (INCLUDING CIGARETTES, VAPING DEVICES), OR PRODUCTS WITH EXPLICIT CONTENT. CAMP BLESSING IS NOT RESPONSIBLE FOR LOST, DAMAGED OR STOLEN ITEMS.

NOTE:

TO ENSURE THE PRIVACY AND PROTECTION OF ALL CAMP PARTICIPANTS ALL CELL PHONES AND ANY OTHER TECHNOLOGY (SMART WATCHES, CAR KEYS ETC.) THAT IS NOT A PRIMARY COMMUNICATION DEVICE WILL BE COLLECTED AT THE BEGINNING OF EACH WEEK AND WILL BE STORED IN THE CAMP OFFICE AND WILL BE RETURNED AT THE END OF THE WEEK PRIOR TO DEPARTURE. IT IS BEST TO LEAVE THESE AT HOME!

EXTRA NOTES:

- OUTSIDE OF SNAIL MAIL, IF A CAMPER HAS A NON-EMERGENCY THAT NEEDS TO BE COMMUNICATED, CALL THE CAMP OFFICE AT (281-259-5789, EXT. 1, OR EMAIL BETH AT BETH@CAMPBLESSING.ORG
- TRY AND KEEP ALL LUGGAGE DOWN TO 1-2 BAGS OR A TRUNK WITH NO LOOSE ITEMS.
- PLEASE LABEL ALL BAGS AND INDIVIDUAL ITEMS WITH YOUR CAMPER'S NAME
- THEME COSTUMES: GET CREATIVE!

GENUINE 2025

SUMMER THEME



The 2025 Summer Theme is **GENUINE**. This comes from the book of Romans. This is a very practical call about how we, as followers of Christ, are to act as we engage the world. We are called to love others with **GENUINE** love just as Christ loved us!

LET LOVE BE GENUINE. HATE WHAT IS EVIL; HOLD ONTO WHAT IS GOOD. LOVE ONE ANOTHER AS BROTHERS AND SISTERS. OUTDO ONE ANOTHER IN SHOWING HONOR

- ROMANS 12:9-10

PARTY THEMES

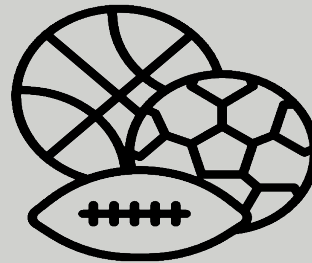
We'll have four nights of parties filled with games, dancing and theme-filled fun. We've included a few ideas to help you plan for packing



"BLACKOUT"

VOLUNTEER ARRIVAL

- ALL BLACK CLOTHING (I.E. SHIRTS, SHORTS, SOCKS, SHOES, SWEAT BANDS, ETC)
- EYE BLACK PAINT
- THESE CLOTHES WILL GET DIRTY!!



"FIELDS OF FAITH"

CARNIVAL NIGHT

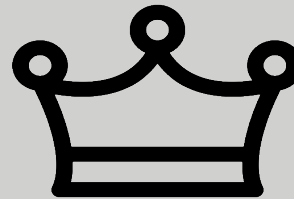
- SPORT JERSEYS
- REFEREE



"WELCOME TO THE 70'S"

MESSY GAMES

- TIE-DYE
- "HIPPIE"
- THESE MAY GET DIRTY OR MESSY



"ROYAL FAMILY"

TALENT SHOW

- CROWNS
- PRINCE / PRINCESS
- KING / QUEEN



CROSS CARRY

- "NICE CASUAL"
- POLO SHIRT
- SHORTS / KHAKIS / JEANS
- SKIRTS / DRESSES
(APPROPRIATE LENGTH AND STYLE)

DAILY CAMP SCHEDULE

MONDAY

- 2:00 VOLUNTEER ARRIVAL
- 3:15 VOLUNTEER WELCOME
- 3:30 TRAINING SESSION 1
- 4:00 GAME
- 4:15 TRAINING SESSION 2
- 5:00 BREAK
- 5:30 TRAINING SESSION 3
- 6:00 DINNER
- 6:45 TEAM BUILDING
- 7:45 1ST LOOK - CAMPER APPS
- 8:30 WRAP UP / WORSHIP
- 9:15 CABIN TIME / DEVO
- 10:30 LIGHTS OUT

TUESDAY

- 7:45 RISE AND SHINE (CABIN WAKE UP)
- 8:30 BREAKFAST
- 9:00 CAMPER APP QUESTIONS / CLARIFICATION
- 9:45 TRAINING SESSION 4
- 10:30 STORE OPEN FOR VOLUNTEERS
- 11:00 TRAINING SESSION 5
- 12:30 LUNCH
- 1:00 TRAINING SESSION 6
- 2:00 TRAINING SESSION 7
- 2:45 MEET AT CHEER LINE - GET EXCITED!!!
- 3:00 CAMPER ARRIVAL
- 5:45 CAMPER WELCOME
- 6:00 DINNER
- 6:45 WRAP UP
- 7:15 CARNIVAL / DANCE
- 9:30 DEVO
- 10:30 LIGHTS OUT

WEDNESDAY - FRIDAY

- 7:30 RISE AND SHINE
- 8:30 BREAKFAST
- 9:15 CABIN DEVO
- 10:00 1ST ACTIVITY
- 11:15 2ND ACTIVITY
- 12:30 LUNCH
- 1:15 FOB (FLAT ON BACK)
- 2:30 3RD ACTIVITY
- 3:45 4TH ACTIVITY
- 4:45 CABIN TIME / ACTIVITY PROCESSING
- 5:30 DINNER
- 6:15 WRAP UP
- 6:45 EVENING EVENT
- 9:30 VOLUNTEER SAY-SO
- 10:30 LIGHTS OUT (WED. / THURS)
- 11:00 LIGHTS OUT (FRI.)

SATURDAY

- 7:30 RISE AND SHINE
- 8:30 BREAKFAST
- 9:15 CABIN DEVO & CABIN CLEAN UP
- 10:30 CLOSING CEREMONIES
- 11:30 CAMPER DEPARTURE
- 11:45 VOLUNTEER DEPARTURE

CAMP DATES

TERM 1 : JUNE 2 - 7

TERM 2 : JUNE 9 - 14

TERM 3 : JUNE 16 - 21

TERM 4 : JUNE 23 - 28

TERM 5 : JUNE 30 - JULY 5

TERM 6 : JULY 7 - 12

TERM 7 : JULY 14 - 19

TERM 8 : JULY 21 - 26

TERM 9 : JULY 28 - AUGUST 2

ARRIVAL & PICK UP

ARRIVAL: MONDAY BETWEEN 2-3PM CDT

PICK UP: SATURDAY AFTER CLOSING CEREMONIES

(BETWEEN 11:45AM-12:00PM)

***WE UNDERSTAND THAT THIS IS AN EXCITING TIME, BUT WE ASK THAT YOU PLEASE RESPECT THE DROP-OFF AND PICK-UP TIMES

YOU'RE INVITED

TO OUR SATURDAY CLOSING CEREMONIES

WHERE: CAMP BLESSING TEXAS PAVILLION

WHEN: SATURDAY (THE LAST DAY OF YOUR VOLUNTEER'S SERVICE)

GATES OPEN: SATURDAY @ 10:00AM

CEREMONY BEGINS: SATURDAY @ 10:30AM

VOLUNTEERS HELP CAMPERS TO THEIR CARS: 11:00AM

VOLUNTEERS CHECKOUT: 11:45AM



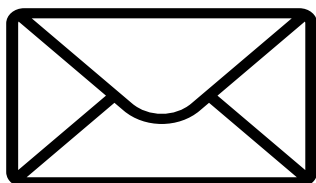
WHY: YOUR VOLUNTEERS DO BEAUTIFUL WORK. COME CELEBRATE THEIR SERVICE!

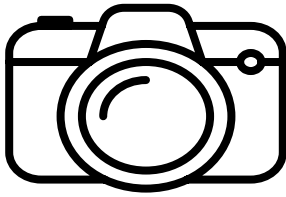
MAIL CALL

ALL PACKAGES AND MAIL SHOULD BE SENT TO:

CAMP BLESSING TEXAS
"VOLUNTEER NAME"
7227 CAMP BLESSING LN.
BRENHAM, TX 77833

MAIL WILL BE DISTRIBUTED DAILY. ANY MAIL WE RECEIVE AFTER YOUR TERM WILL BE RETURNED TO THE SENDER. PLEASE **DO NOT** SEND FOOD OR CANDY!





PHOTOS

TO ACCESS PHOTOS, YOU CAN EITHER DOWNLOAD THE WALDO PHOTOS MOBILE APP OR VISIT THE ONLINE GALLERY. BOTH OPTIONS ALLOW YOU TO ACCESS AND BROWSE OUR GALLERY FOR FREE, BUT WILL REQUIRE YOU TO CREATE AN ACCOUNT. WE WILL PROVIDE AN ACCESS CODE UPON CAMP ARRIVAL.



GENERAL STORE

ONCE YOU GET TO CAMP, BE SURE TO CHECK OUT THE GENERAL STORE FOR ALL THE LATEST CAMP MERCHANDISE AND SWAG! OUR STORE INCLUDES T-SHIRTS, OUTERWEAR, WATER BOTTLES, HATS, DECALS, JOURNALS, AND MORE! PROUDLY REPRESENT CAMP BLESSING WHEREVER YOU GO! IF YOU CAN'T STOP BY IN PERSON, YOU CAN ALSO VISIT OUR ONLINE STORE [HERE](https://camp-blessing-texas.square.site/) (HTTPS://CAMP-BLESSING-TEXAS.SQUARE.SITE/)!

GENERAL POLICIES

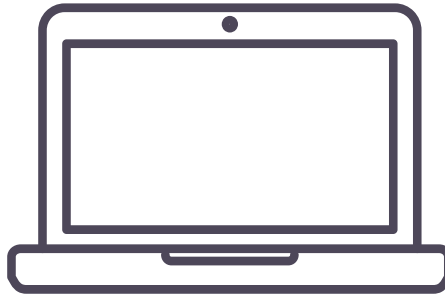
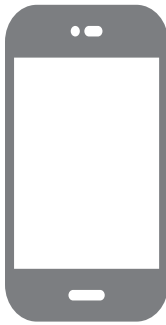
ALCOHOL, ILLEGAL DRUGS & TOBACCO:

OUR STAFF DOES NOT CONDONE OR PERSONALLY USE ILLEGAL DRUGS OR TOBACCO. WE DO NOT CONDONE THE ABUSE OF ALCOHOL OR ALLOW FOR DRUNKENNESS. ANY ALCOHOL, TOBACCO OR DRUGS FOUND WILL BE CONFISCATED AND MAY RESULT IN THE INDIVIDUAL IN POSSESSION OF IT BEING SENT HOME.

SEXUAL BEHAVIOR:

WE LOVE ALL OF GOD'S PEOPLE AND WE KNOW SIN TAKES MANY FORMS. WE DO NOT CONDONE PREMARITAL SEX AND HOMOSEXUAL RELATIONSHIPS IN ACCORDANCE WITH GOD'S LAWS. ADDITIONALLY, ANY CONVERSATIONS REVOLVING AROUND SEXUAL OR GENDER IDENTITY, ORIENTATION OR PREFERENCE ARE **NOT** CAMP APPROPRIATE TOPICS AND SHOULD NOT BE DISCUSSED WHILE AT CAMP. PER THIS STATEMENT, ALL CABINS WILL BE ASSIGNED BASED ON BIOLOGICAL SEX.

GENERAL APPEARANCE: EVERYONE SHOULD KEEP A NEAT APPEARANCE. IF YOU HAVE LONG HAIR, IT'S RECOMMENDED TO KEEP IT IN A PONYTAIL FOR YOUR SAFETY.



COMMUNICATION AND TECHNOLOGY:

CELL PHONES, LAPTOPS AND SMART WATCHES:

IN ORDER TO ENSURE CAMPER PRIVACY, PROTECTION AND DIGNITY, AS WELL AS TO AVOID DISTRACTION AND FULLY IMMERSE YOURSELF IN THE CAMP BLESSING EXPERIENCE, CELL PHONES, LAPTOPS AND SMART WATCHES ARE NOT TO BE BROUGHT TO CAMP. WE DO NOT ALLOW THE USE OF CELL PHONES OR SMART WATCHES AT CAMP FOR ANY REASON. IF YOU NEED TO MAKE AN EMERGENCY CALL, THERE ARE PHONES AVAILABLE. (EXCEPTIONS ARE MADE TO THIS POLICY FOR GROUP LEADERS AND ADULT LEADERS - 30 AND OVER).

NOTE: ALL CELL PHONES, SMART WATCHES, CAR KEYS AND ANY OTHER TECHNOLOGY WILL BE COLLECTED AT THE BEGINNING OF EACH WEEK AND WILL BE STORED IN THE CAMP OFFICE AND WILL BE RETURNED AT THE END OF THE WEEK PRIOR TO DEPARTURE. IT IS BEST TO LEAVE THESE AT HOME!

OUTSIDE OF SNAIL MAIL IF A PARENT HAS A NON-EMERGENCY THAT NEEDS TO BE COMMUNICATED, CALL THE CAMP OFFICE AT (281)259-5789, OR EMAIL BETH AT [BETH@CAMPBLESSING.ORG](mailto:beth@campblessing.org). ALL VOLUNTEERS WILL BE FULLY ENGAGED IN THE CAMP EXPERIENCE, SO IT IS NOT POSSIBLE FOR OUR STAFF TO DIRECT PERSONAL, NON-EMERGENCY CALLS TO VOLUNTEERS. IF AN ISSUE ARISES, THE CAMP DIRECTOR WILL CALL PARENTS IMMEDIATELY. A CAMP NURSE WILL CONTACT ABOUT ANY HEALTH AND INJURY RELATED ISSUES.

CBTX VOLUNTEER DRESS CODE

WE STRIVE TO GLORIFY JESUS CHRIST IN EVERYTHING WE DO. WE ESPECIALLY WANT CAMPER'S TO SEE OUR STAFF AND VOLUNTEERS AS LIVING EXAMPLES OF CHRIST. WE HAVE SPECIFIC POLICIES DESIGNED TO ALLOW YOU TO UNDERSTAND WHAT WE BELIEVE IS RIGHT AND TRUE IN THE EYES OF OUR LORD. THESE POLICIES ARE ALSO DESIGNED FOR YOUR SAFETY AND WELLNESS DURING CAMP. IF YOU HAVE ANY QUESTIONS ABOUT THESE POLICIES, PLEASE CALL OR EMAIL US.

SHORTS / PANTS:

- FULL COVERAGE
- FIT YOU AND YOUR BODY TYPE AND SHAPE
- FITS THE ACTIVITY / ELEMENTS THAT YOU WILL BE PARTICIPATING IN (SITTING, SQUATTING, RIDING A HORSE, WIND ETC.)
- NO SHORTS THAT ARE SPLIT ON THE SIDES, EVEN IF THEY HAVE SPANDEX UNDERNEATH
- IF WEARING TIGHTER SHORTS, MUST FULLY COVER FRONT AND BACKSIDE WITHOUT CAUSING LAMP-SHADING; SHORTS SHOULD STILL BE CLEARLY VISIBLE UNDER SHIRT.
- NO MINI SKIRTS / TENNIS SKIRTS / SKORTS
- NO SHORTS OR PANTS WITH WORDS ACROSS THE SEAT ARE TO BE WORN AT ANY TIME.
- SHORTS MUST BE VISIBLE UNDER LONGER SHIRTS. LEGGINGS ARE APPROPRIATE ONLY IF AND WHEN FRONT AND BACK AREAS ARE COMPLETELY COVERED.
- UNDERGARMENTS SHOULD NEVER BE VISIBLE

SHIRTS:

- FULL COVERAGE, EVEN WHEN REACHING UP OR LEANING OVER (THIS MEANS NO SHIRTS WITH BACK CUT-OUTS)
- NO INSCRIPTIONS OR ADVERTISING FOR QUESTIONABLE PRODUCTS (I.E., BEER PRODUCTS OR SLANDEROUS SAYINGS).
- NO SPAGHETTI-STRAPS, STRAPLESS TIGHT-FITTING, OR LOW-CUT SHIRTS.
- SHIRTS MUST COVER THE ABDOMEN, EVEN WHEN HANDS ARE LIFTED IN THE AIR.
- UNDERGARMENTS SHOULD NEVER BE VISIBLE

SHOES:

- SHOES MUST BE WORN AT ALL TIMES.
- CLOSED TOED SHOES WITH SOCKS MUST BE WORN AT HORSES, ARCHERY AND ROPES, NO EXCEPTIONS.
- CLOSED-TOE SHOES OR SHOES WITH A STRAP GOING ACROSS THE TOP OF THE FOOT AND AROUND THE HEEL (I.E., CHACOS OR TEXAS) ARE REQUIRED DURING ALL ACTIVITIES, WITH THE EXCEPTION OF TO AND FROM THE POOL.

SWIMSUITS:

- MEN MUST WEAR SWIM TRUNKS (NO SPEEDOS).
- WOMEN MUST WEAR MODEST ONE-PIECE SWIMSUITS. TWO-PIECE SWIMSUITS WILL BE PERMITTED PROVIDED THEY COMPLETELY COVER THE ABDOMEN AREA EVEN WITH HANDS IN THE AIR.
- NO LOW-CUT SWIMSUITS ARE TO BE WORN. IF NECESSARY, GIRLS MAY WEAR SHIRTS OVER THEIR SWIMSUITS AS LONG AS THE SHIRTS ARE NOT WHITE. IT IS HIGHLY RECOMMENDED FOR GIRLS TO WEAR SHORTS OVER THEIR SWIMSUIT.
- WHEN GIRLS ARE A BUDDY TO A MALE CAMPER, SHE MUST WEAR SHORTS AT THE SWIMMING POOL

CROSS CARRY:

- DRESSES AND SKIRTS ARE APPROPRIATE
- NO CLEAVAGE
- FULL COVERAGE (SEE ABOVE)
- NOT OVERLY TIGHT
- NOT TOO LOOSE / GAPY

TATTOOS & BODY PIERCINGS:

WHILE AT CAMP, IT IS SUGGESTED THAT ALL PIERCINGS BE REMOVED FOR SAFETY REASONS. IF YOU DO NOT CHOOSE TO REMOVE, PLEASE ONLY USE STUDS. OUR VOLUNTEERS WILL WEAR NO NAVAL, EYEBROW, OR TONGUE JEWELRY AT CAMP (THIS IS A SAFETY ISSUE). AT THE DISCRETION OF THE CAMP DIRECTOR, ANY TATTOO THAT MAY BE VIEWED AS INAPPROPRIATE WILL NEED TO BE COVERED AT ALL TIMES.

CBTX CODE OF CONDUCT

EVERYONE AT CAMP BLESSING IS EXPECTED TO FOLLOW OUR CODE OF CONDUCT EXPLICITLY - IT'S COMPREHENSIVE AND FALLS INTO THREE MAIN CATEGORIES:

1. PHYSICAL SAFETY & SECURITY: *ALWAYS RESPECT THE OTHER PERSON'S PHYSICAL BOUNDARIES. CAMP IS NOT THE PLACE FOR PHYSICAL RELATIONSHIPS OF ANY KIND.*

- NO KISSING.*
- NO SHARING OF SHOWER OR BATHROOM STALLS.*
- EVERYONE SLEEPS IN HIS / HER OWN BED.*
- NO HITTING, KICKING, SLAPPING, OR PUNCHING.*
- NO TICKLING OR TOUCHING OF PRIVATE AREAS.*
- NO TOUCHING OF PRIVATE AREAS (THIS INCLUDES SLAPPING SOMEONE ON THE REAR).*
- NO PHYSICALLY DEMEANING HUMOR (WEDGIES ETC.).*
- NO WALKING ABOUT CABIN WITHOUT COVERING PRIVATE AREAS (NOT EVEN CAMPERS OF THE SAME SEX).*

2. VERBAL COMMUNICATION: *ALWAYS USE APPROPRIATE VERBAL COMMUNICATION. THERE ARE NO EXCEPTIONS.*

- NO LYING.*
- NO GOSSIPING.*
- NO NAME CALLING OF ANY KIND (EVEN JOKINGLY).*
- NO TALKING ABOUT ANOTHER'S PHYSICAL BODY.*
- NO PROFANE LANGUAGE OR USE OF SLANG TERMS.*
- NO DISCUSSIONS OF A SEXUAL NATURE.*

3. VOLUNTEER SPECIFIC

- NO CAMPER OR VOLUNTEER IS TO BE TAKEN OFF ALONE.*
- DO NOT GIVE INDIVIDUAL GIFTS OF A PERSONAL NATURE TO CAMPERS.*
- DO NOT SHOW FAVORITISM TO A PARTICULAR CAMPER.*
- PRIVATE CONVERSATION IS TO BE DONE IN A PUBLIC SETTING (SEEN BUT NOT NECESSARILY HEARD).*
- VOLUNTEERS SHOULD ALWAYS HOLD OTHER VOLUNTEERS ACCOUNTABLE.*
- VOLUNTEERS SHOULD BE ABOVE REPROACH AT ALL TIMES.*
- OPEN DOOR MEETING POLICY: NO VOLUNTEER SHOULD BE WITH ANYONE ELSE BEHIND A CLOSED DOOR OR PRIVATE AREA AT ANY TIME. IF A ONE-ON-ONE MEETING IS REQUIRED, IT SHOULD BE DONE IN A CLEAR, VISIBLE PLACE WHERE OTHERS ARE PRESENT.*

CONSEQUENCES: *ANY INFRACTION OF THE ABOVE POLICY WILL BE IMMEDIATE GROUNDS FOR DISMISSAL WITH NO CHANCE FOR RE-HIRE OR RETURN TO CAMP BLESSING. A VIOLATION OF ONE OF THESE POLICES MIGHT NOT ONLY BE MISUNDERSTOOD BY YOUTH / STAFF BUT COULD RESULT IN LEGAL CONSEQUENCES.*

CBTX VOLUNTEER DISCIPLINARY PROCEDURES

2-STRIKE POLICY: IN ORDER TO REMAIN FOCUSED ON OUR MISSION AT CAMP BLESSING AND TO ENSURE THE SAFETY AND ADEQUATE SUPERVISION OF ALL OF OUR VOLUNTEERS AND CAMPERS, TWO DISCIPLINARY ACTIONS WITH A VOLUNTEER WILL RESULT IN THE DISMISSAL FROM CAMP.

- STRIKE 1:** CAMP STAFF WILL HAVE A CONVERSATION WITH THE VOLUNTEER REGARDING THEIR BEHAVIOR . CAMP WILL CALL THE PARENTS / GUARDIANS TO NOTIFY THEM OF THE INFRACTION.
- STRIKE 2:** CAMP STAFF WILL CALL THE PARENTS / GUARDIANS TO PICK UP THE VOLUNTEER WITHIN 8 HOURS.

EVENTS WHICH WILL RESULT IN IMMEDIATE DISMISSAL FROM CAMP:

- THREATS OR ACTS WITH INTENTION TO HARM SELF OR OTHERS**
- DISCRIMINATION**
- INDECENT EXPOSURE**
- POSSESSION OR USE OF DRUGS, ALCOHOL OR WEAPONS (THIS INCLUDES VAPES)**

EFFECTS OF DISCIPLINARY ACTIONS ON SERVICE HOURS:

- IF A VOLUNTEER IS SENT HOME DUE TO DISCIPLINARY ACTIONS, HE / SHE WILL FORFEIT HIS / HER SERVICE HOURS**
- ANY INFRACTIONS OF CAMP POLICY THAT DO NOT RESULT IN DISMISSAL FROM CAMP, MAY BE SUBJECT TO THE PARTIAL LOSS OF SERVICE HOURS.**

ILLNESS PICK-UP POLICY

ILLNESS:

- **IF YOUR VOLUNTEER IS SHOWING SYMPTOMS OF AN ILLNESS, THEY WILL BE TAKEN TO THE CLINIC FOR MONITORING AND WILL BE ISOLATED FROM CAMP ACTIVITIES FOR A PERIOD OF 24 HOURS FOLLOWING THE LAST SIGN OF SYMPTOMS**
- **IF THEY HAVE A FEVER, THEY WILL BE ISOLATED FROM CAMP ACTIVITIES AND MONITORED. THEY MAY RETURN TO CAMP ACTIVITIES FOLLOWING 24 HOURS BEING FEVER FREE **WITHOUT MEDICATION.****
- **IF THE FEVER PERSISTS FOR MORE THAN 24 HOURS, THE PARENT OR GUARDIAN WILL BE CALLED AND WILL NEED TO PICK UP THE VOLUNTEER WITHIN 8 HOURS.**
- **PARTIAL REFUNDS MAY BE GIVEN IF EARLY DEPARTURE IS A RESULT OF ILLNESS.**

GUIDELINES FOR APPROPRIATE CONDUCT WITH CAMPERS - 3 "T'S"

TALK APPROPRIATE:

- VERBAL PRAISE FOR ACHIEVEMENT OR BEHAVIOR
- VERBAL ENCOURAGEMENT
- SCRIPTURALLY BASED TEACHING (NON-SEXUAL)

NOT APPROPRIATE:

- COMPLIMENTS OR QUESTIONS RELATING TO PHYSIQUE OR BODY DEVELOPMENT
- SEXUAL JOKES, HOMOSEXUAL INNUENDOS, OR BATHROOM HUMOR
- SWEARING OR VULGAR LANGUAGE
- VERBAL HARASSMENT OR ABUSE
- INDIVIDUAL SECRETS OR SPECIAL GIFTS
- SEXUAL COACHING OR CONVERSATION

TERRITORY APPROPRIATE:

- PUBLIC ONE-ON-ONE INTERACTION
- GROUP OR PUBLIC ENVIRONMENT

NOT APPROPRIATE:

- SITTING OR LYING ON A BED WITH A MINOR
- PRIVATE ONE-ON-ONE INTERACTIONS

TOUCH APPROPRIATE:

- HANDSHAKES AND HIGH FIVES
- WALKING HAND-IN-HAND WITH CAMPERS
- SHORT, CONGRATULATORY OR GREETING HUGS
- ARM AROUND THE SHOULDERS
- LEG SITTING WITH CAMPERS

NOT APPROPRIATE:

- INTIMATE WRESTLING OR TICKLING
- PRIVATE BACK RUBS, ARM TICKLES, MESSAGES, ETC.
- TOUCHING OF PRIVATE PARTS
- TOUCHING A CHILD IN ANGER, DISGUST, OR FRUSTRATION
- FRONTAL HUGS WITH OPPOSITE SEX
- SEXUAL EMBRACES
- LAP SITTING
- KISSING

ADDITIONAL GUIDELINES: MODESTY DICTATES THAT CAMPERS, VOLUNTEERS, AND SUMMER STAFF NEVER SIT AROUND OR WALK WITHOUT A TOWEL OR CLOTHING COVERING PRIVATE AREAS. TOWELS MUST BE WORN AT ALL TIMES WHEN GOING TO OR FROM THE SHOWER. NO EXCEPTIONS! IT IS AGAINST POLICY TO DISPLAY SEXUAL BODY PARTS INTENTIONALLY—EVEN IF IT'S A JOKE.

AS A MINISTRY CARING FOR INDIVIDUALS WITH SPECIAL NEEDS, WE KNOW THAT SOME OF OUR CAMPERS WILL REQUIRE AN ADDITIONAL LEVEL OF PERSONAL CARE ASSISTANCE WITH HYGIENE DURING THEIR TIME AT CAMP BLESSING. WE TAKE THIS RESPONSIBILITY VERY SERIOUSLY. WE ARE VERY CAREFUL IN HOW WE TRAIN OUR STAFF AND VOLUNTEERS TO MODESTLY ADMINISTER PERSONAL CARE IF NEEDED. TWO CAREGIVERS ARE REQUIRED TO BE PRESENT AT ALL TIMES FOR SAFETY, THIS INCLUDES DURING HYGIENE ADMINISTRATION. IF A CAMPER REQUIRES ADDITIONAL ASSISTANCE IN THEIR DAILY LIVING ACTIVITIES AND YOU WOULD LIKE MORE INFORMATION ON HOW WE TRAIN OR ADMINISTER THIS CARE, WE WOULD BE MORE THAN HAPPY TO SPEAK WITH YOU. PLEASE CALL THE OFFICE.

CBTX SAFETY POLICY

3-6-0 STANDARD

BASED ON OUR CODE OF CONDUCT, THE FOLLOWING RULES AND BOUNDARIES HAVE BEEN ESTABLISHED IN ORDER FOR OUR CAMPERS, VOLUNTEERS, AND SUMMER STAFF TO HAVE A SAFE, SECURE, AND ENJOYABLE EXPERIENCE AT CAMP BLESSING. UNDERSTANDING AND FOLLOWING THESE RULES / BOUNDARIES WILL HELP EVERYONE HAVE THE TIME OF THEIR LIFE AT CAMP!

"3" RULES

FIRST :RECOGNIZE UNACCEPTABLE BEHAVIOR. YOU MUST KNOW AND UNDERSTAND THE CODE OF CONDUCT SO YOU CAN EASILY RECOGNIZE WHAT IS ACCEPTABLE AND UNACCEPTABLE BEHAVIOR. THE 6 BOUNDARIES OUTLINED BELOW WILL HELP TOO.

SECOND :RESIST UNACCEPTABLE BEHAVIOR. NO CAMPER, VOLUNTEERS, OR SUMMER STAFF SHOULD EVER FEEL UNCOMFORTABLE OR UNSAFE AT CAMP. EVERYONE HAS THE RIGHT TO SAY NO AND REMOVE THEMSELVES FROM THE SITUATION OR DISTANCE THEMSELVES FROM THE PERSON MAKING THEM FEEL UNCOMFORTABLE OR UNSAFE.

THIRD :REPORT WHAT MAKES YOU FEEL UNCOMFORTABLE OR IF A RULE HAS BEEN BROKEN.

HOW TO REPORT

- TELL CABIN LEADER OR THE CAMP DIRECTOR.*
- TELL A MEMBER OF THE MEDICAL TEAM IN THE CLINIC.*

"6" BOUNDARIES

1. MODESTY: PRIVATE BODY PARTS SHOULD BE COVERED AT ALL TIMES (SWIMMING, TO / FROM SHOWER, DRESSING, SLEEPING ETC.) NO EXCEPTIONS. NEVER DISPLAY YOUR PRIVATE BODY PARTS TO ANYONE OR TOUCH SOMEONE ELSE'S.

2. ONE-ON-ONES: YOU SHOULD NEVER BE ALONE WITH A CAMPER OR YOUTH WHERE OTHERS ARE NOT PRESENT. THERE SHOULD ALWAYS BE A THIRD PERSON PRESENT OR IN VIEW. NEVER TELL A CAMPER A SECRET OR TELL THEM "NOT TO TELL". WE HAVE NO SECRETS AT CAMP BLESSING TEXAS. NONE.

3. GOOD TOUCH VS. BAD TOUCH: APPROPRIATE TOUCH INCLUDES HIGH-FIVES, SHORT SIDE HUGS, ARM AROUND THE SHOULDERS, ETC. AND MAKES YOUR CAMPER OR PEER FEEL SAFE AND ENCOURAGED. INAPPROPRIATE TOUCH IS ANY TOUCH THAT MAKES YOUR CAMPER OR PEER FEEL UNCOMFORTABLE (TOUCHING PRIVATE PARTS, HITTING, PUSHING, LAP SITTING, ETC.) REFER TO THE CODE OF CONDUCT FOR ADDITIONAL EXAMPLES.

4. GOOD TALK VS. BAD TALK: ALWAYS ENCOURAGE ONE ANOTHER WITH POSITIVE, PURE, UPLIFTING SPEECH. NEGATIVE, DISRESPECTFUL, SEXUAL, AND / OR PROFANE LANGUAGE WILL NOT BE TOLERATED. REMEMBER EPHESIANS 4:29. "DO NOT LET ANY UNWHOLESOME TALK COME OUT OF YOUR MOUTHS, BUT ONLY WHAT IS HELPFUL FOR BUILDING OTHERS UP ACCORDING TO THEIR NEEDS, THAT IT MAY BENEFIT THOSE WHO LISTEN."

5. BULLYING: CAMP BLESSING HAS ZERO TOLERANCE FOR BULLYING. IF YOU ARE BULLYING SOMEONE (OR THEY PERCEIVE YOU TO BE) AND THEY ASK YOU TO STOP, YOU MUST STOP. IF YOU OBSERVE OR ARE THE TARGET OF BULLYING, REPORT IT IMMEDIATELY.

6. YOUR TERRITORY: YOUR BODY, YOUR SPACE, YOUR STUFF, YOUR BED ARE OFF-LIMITS TO EVERYONE ELSE. NO ONE SHOULD BE IN YOUR TERRITORY WITHOUT YOUR PERMISSION AND YOU SHOULD NOT BE IN THEIR TERRITORY WITHOUT THEIRS.

"0" ZERO TOLERANCE

IF YOU DECIDE NOT TO ABIDE BY THESE RULES AND BOUNDARIES, YOU MAY BE IMMEDIATELY DISMISSED FROM CAMP.

SUPPORT THE MISSION!

LET US NOT BECOME WEARY IN DOING GOOD, FOR AT THE PROPER TIME WE WILL REAP A HARVEST IF WE DO NOT GIVE UP. 10 THEREFORE, AS WE HAVE OPPORTUNITY, LET US DO GOOD TO ALL PEOPLE, ESPECIALLY TO THOSE WHO BELONG TO THE FAMILY OF BELIEVERS.

-GALATIANS 6:9-10

AMAZON WISHLIST



DONATE



SERVICES NEEDED:

- *CONCRETE / FLATWORK CONTRACTOR TO HELP PAVE PATHS*
- *ARCHITECTURAL DESIGN SERVICES*
- *CONSTRUCTION CONTRACTING*
- *FOOD DONATIONS FOR STAFF HONORS BANQUET (AUG. 2)*

EQUIPMENT NEEDS:

- *UTILITY VEHICLES*
- *TRACTOR WITH A BUCKET*
- *SKID STEER*

CAMP
BLESSING
TEXAS
LOVE * ACCEPTANCE * FUN

